
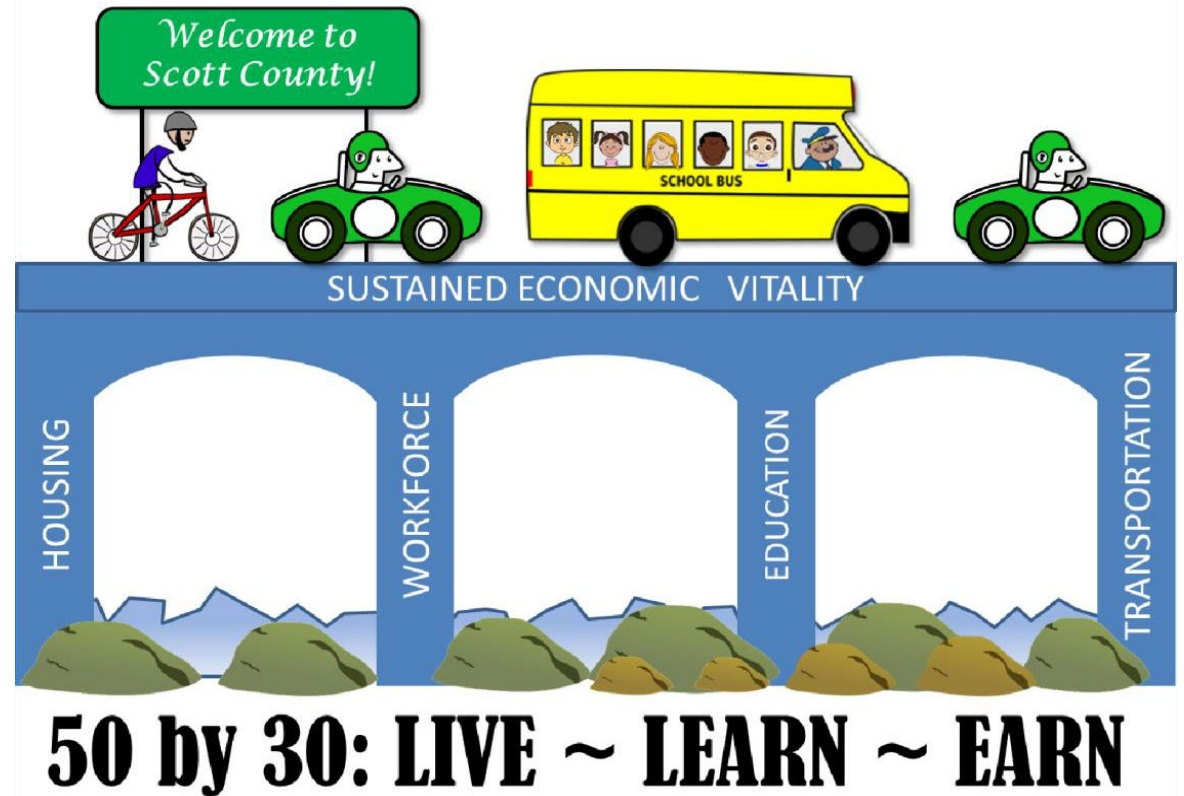


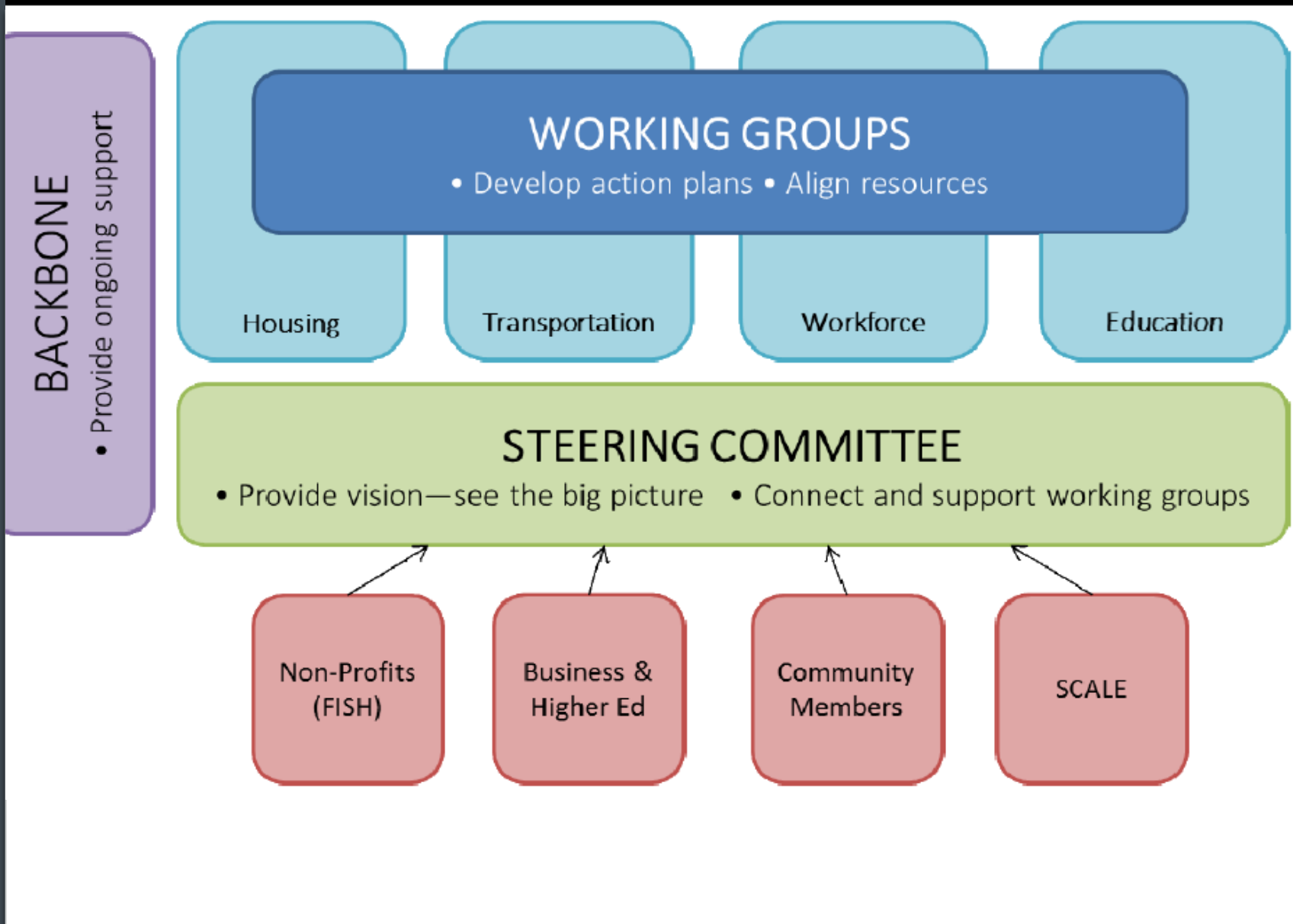
Live Learn Earn Housing Workgroup

SCALE Meeting – 06/10/22



Live Learn Earn (LLE) Overview





Role of the Steering Committee

LLE Housing Committee

- Meets monthly (*except July*) on the second Wednesday
- Committee members have included SCALE partner elected and appointed officials, developers, non-profits
- Co-Chairs - Prior Lake City Council Member Kim Churchill, Savage Resident Fred Corrigan
- Thanks to LLE Steering Committee Chair and Savage City Council Member Bob Coughlen and former Co-Chair Shakopee City Council Member Brennan, and the Scott County Board
- Has been meeting since 2016 with support of County and CDA staff
- Developed Housing Blueprint in 2021

- Please sign up to receive Committee meeting agendas and join the discussion
 - Email Peter Goldstein – pgoldstein@co.scott.mn.us

Vision Statement

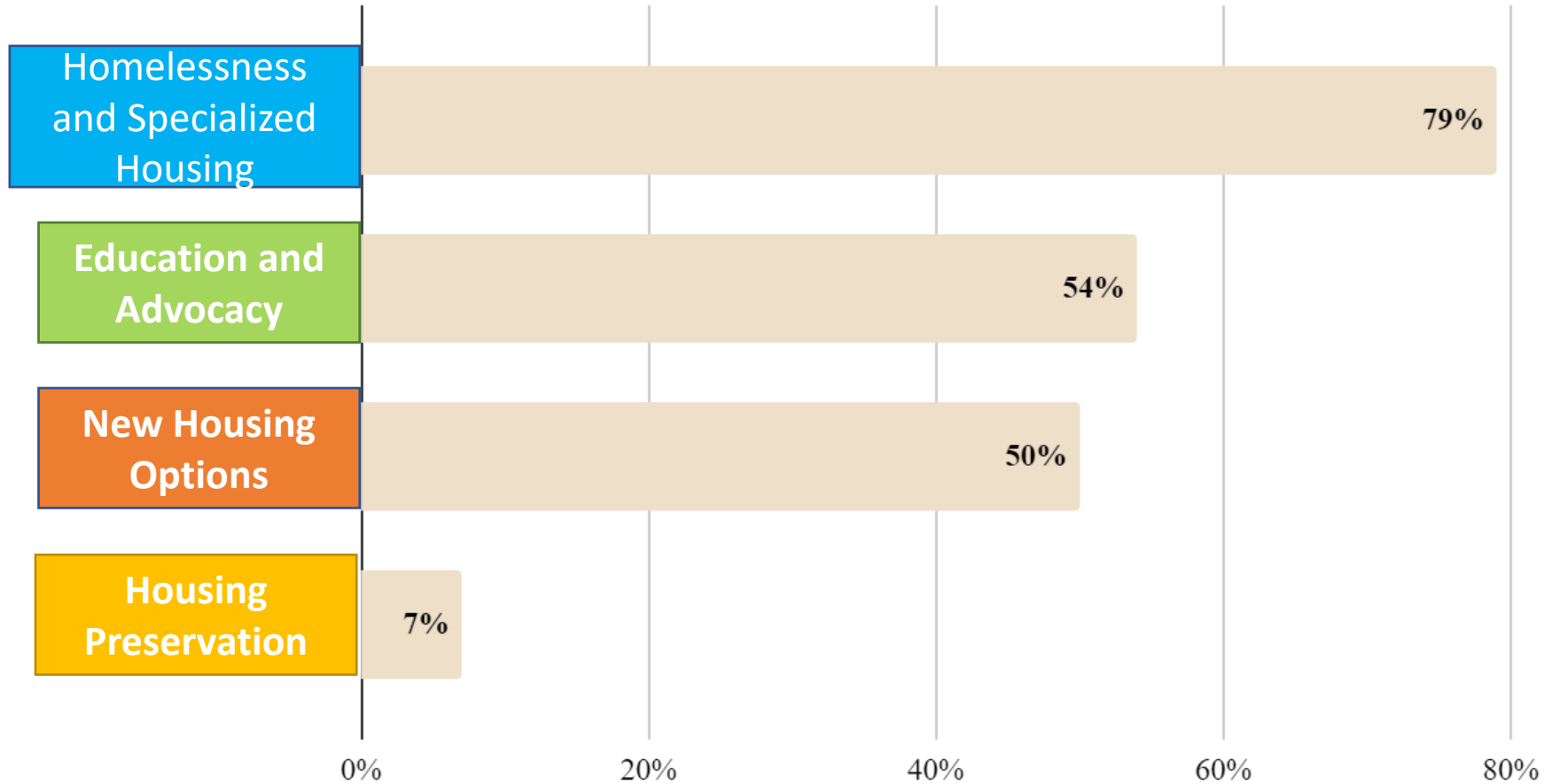
Work together as a collaborative community to solve housing issues and spotlight strengths for the benefit of Scott County and its residents **to ensure a diverse range of housing options for a resident's entire life at an affordable price**

Purpose

- Prioritize County-wide goals and align with community comprehensive plans and goals
- Consolidate county and community efforts; capitalize on staffing, funding, and organizational efforts
- Provide instruction and guidance for collaborating on tools and strategies to address housing issues

Community Conversations/Working Sessions

Top priorities for the Housing Blueprint



HOUSING BLUEPRINT FORMAT

PRIORITY A:

**Homelessness and
Specialized Housing**

6 Objectives

**20 Suggested Strategies
& Tools**

Action Tables

PRIORITY B:

**Education and
Advocacy**

9 Objectives

**15 Suggested
Strategies & Tools**

Action Tables

PRIORITY C:

New Housing Options

6 Objectives

**16 Suggested
Strategies & Tools**

Action Tables

PRIORITY D:

Housing Preservation

3 Objectives

**10 Suggested
Strategies & Tools**

Action Tables

Housing Demand Summary by Community

SUMMARY OF HOUSING DEMAND BY COMMUNITY 2021 - 2040					
Community	General Occupancy Demand				
	SF Detached	SF Attached	Market Rental	Shallow Subsidy	Deep Subsidy
Belle Plaine	662	242	170	150	43
Elko New Market	921	311	144	101	43
Jordan	869	393	279	177	51
New Prague	879	236	169	108	31
Prior Lake	2,841	968	824	317	127
Savage	2,758	704	827	323	129
Shakopee	3,920	1,204	1,138	498	111
Credit River	782	139	78	30	12
Townships	1,096	56	127	0	0

Community	Senior Demand						
	Active Adult Rental	Active Adult Owned	Indep. Living	Assisted Living	Memory Care	Shallow Subsidy	Deep Subsidy
Belle Plaine	57	35	11	26	31	20	63
Elko New Market	3	24	28	26	29	0	21
Jordan	0	22	0	38	18	10	96
New Prague	141	59	48	20	38	16	84
Prior Lake	439	126	167	61	96	0	73
Savage	175	131	118	16	52	14	91
Shakopee	271	73	147	80	60	68	101
Credit River	113	6	61	23	24	6	26
Townships	0	68	0	0	0	0	0





<https://youtu.be/I3NHbhp4Nv4>

Home is a universal concept, a shared experience - success in life starts at home and at all ages and for all people!

Please help the Housing Committee share the following video with your city council, planning commission and local organizations.

Become a CHAMPION for the housing priorities and goals in your community's 2040 Comprehensive plan!

Thank You!