



Mission: To ensure the sustained economic vitality of all Scott County residents

“A government is not going to create an economy, but we should be able to create an atmosphere that is conducive to creating opportunities.”

- Greg Fischer, Mayor of Louisville

- 2009 Unified Economic Development, Land Use, and Transportation Plan

Goal: Have 50% of our resident labor force work in Scott County by 2030

- 2011: Economic Development Strategy Group
- 2012: Creation of First Stop Shop
- 2015: Planning begins for Live Learn Earn (50 by 30)



Collective Impact

We collaborate across systems and sectors to do our work.

Collaborative Leadership

We bring the right people together in constructive ways.

Community Engagement

We engage the community to inform and advance our work.

Evaluating Impact

We identify and amplify what works.

Partners Engaged in Live, Learn, Earn

City of Elko New Market

City of Jordan

City of Prior Lake

City of Savage

City of Shakopee

Scott County

New Prague Public Schools

Prior Lake-Savage Areas Schools

Shakopee Public Schools

SouthWest Metro Intermediate District

Shakopee Mdewakanton Sioux Community

Scott County CDA/First Stop Shop

Community Action Partnership (CAP) Agency

Families and Individuals Sharing Hope (FISH)

Metropolitan Council

The Office of U.S. Representative Angie Craig

Allina/St. Francis

River Valley YMCA

Dakota County Technical College/Inver Hills Community College

Minnesota State University – Mankato

Normandale Community College

Minnesota Department of Employment and Economic Development (DEED)

Minnesota Department of Health (MDH)

Dakota-Scott Workforce Development Board

Nick Slavik Painting & Restoration Co.

Enterprise Knowledge Partners, LLC

Old National Bank

Canterbury

Ron Clark

New Horizon Academy

Beacon Interfaith Housing Collaborative

ThinkSmall

Reach Out and Read

Metropolitan Consortium of Community Developers

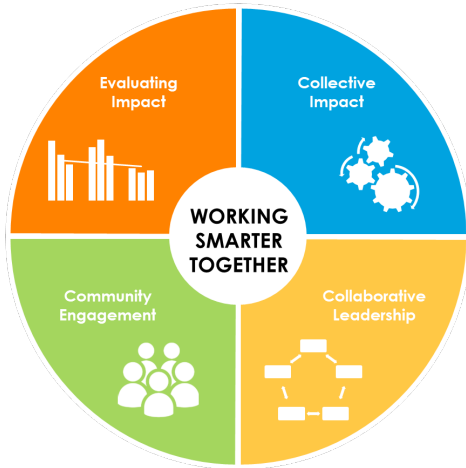
Scott County residents

Housing: Create housing options that give people in all stages of life and of all economic means viable choices for safe, stable, and affordable homes.

Workforce Readiness: Elevate each person's contribution to the community through a rich variety of local employment opportunities and career pathways.

Educational Preparedness: Ensure children are developmentally on track and prepared for educational success.

Transportation: Ensure access to safe, reliable, and affordable transportation options that connect people to jobs, goods, and services.



Collective Impact
We collaborate across systems and sectors to do our work.

Collaborative Leadership
We bring the right people together in constructive ways.

Community Engagement
We engage the community to inform and advance our work.

Evaluating Impact
We identify and amplify what works.

THEN

Community outcomes: make things better for individuals, families, and communities

IF

Systems change: change what holds complex problems in place

Strategic learning: uncover insights key to future progress

“Success doesn’t necessarily equate to trust, agreement, or even liking each other. Success in collaboration means being able to take the next step together.”

- Tom Klaus, collaboration consultant