



Happy Valentine Greetings!





SCALE

Scott County Association For Leadership And Efficiency

Scott Soil and Water Conservation District – 2020 Update



Troy Kuphal
District Director
Feb 14, 2020

Background

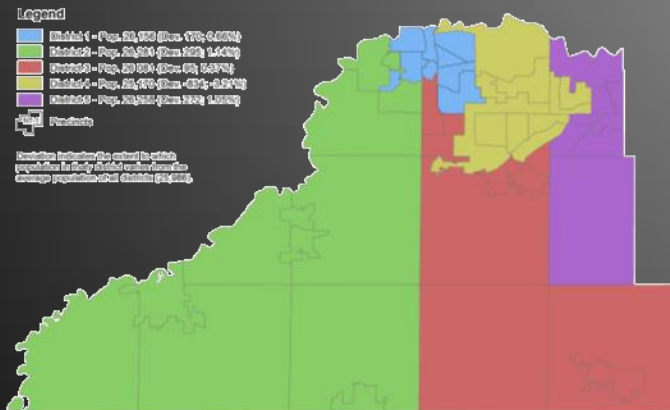
- ▶ Special purpose unit of State government
 - ▶ 103.C MN Stat.
- ▶ Jurisdiction coterminous w/Co
- ▶ Formed in 1941
 - ▶ Heals of the Dust Bowl
 - ▶ Resident petition (voted 161 to 14)
- ▶ 90 SWCD's across Minnesota
 - ▶ 3,000 nationally



Background

▶ Governed by Board of Supervisors

- ▶ 5 members
- ▶ Elected by district
- ▶ Serve 4-year terms
- ▶ Meet every 3rd Tues @ Fairgrounds
- ▶ Open to public



Gary Hartmann, Jim Fitzsimmons, Doug Schoenecker
Linda Brown, Rob Casey

Background



Jon



Kristin, Meghan, Troy, Collin, Todd, Andy, Scott
Shelly, Diann, Hannah, Shelby, Willie

Background

Mission

Promote and support the conservation of natural resources in Scott County through strong partnerships, trusted relationships and excellent service

- ▶ Farmers
- ▶ Lakeshore owners
- ▶ Rural residents
- ▶ Local partners



Background

- ▶ Technical assistance
 - Work 1-on-1 with landowners
 - Assess and discuss erosion, runoff and water quality concerns
 - Identify, design, construct solutions
- ▶ Water quality monitoring
- ▶ Education and outreach
- ▶ Construction site erosion
- ▶ Wetlands protection
- ▶ Groundwater conservation

one
STOP
Shop ...for
Conservation

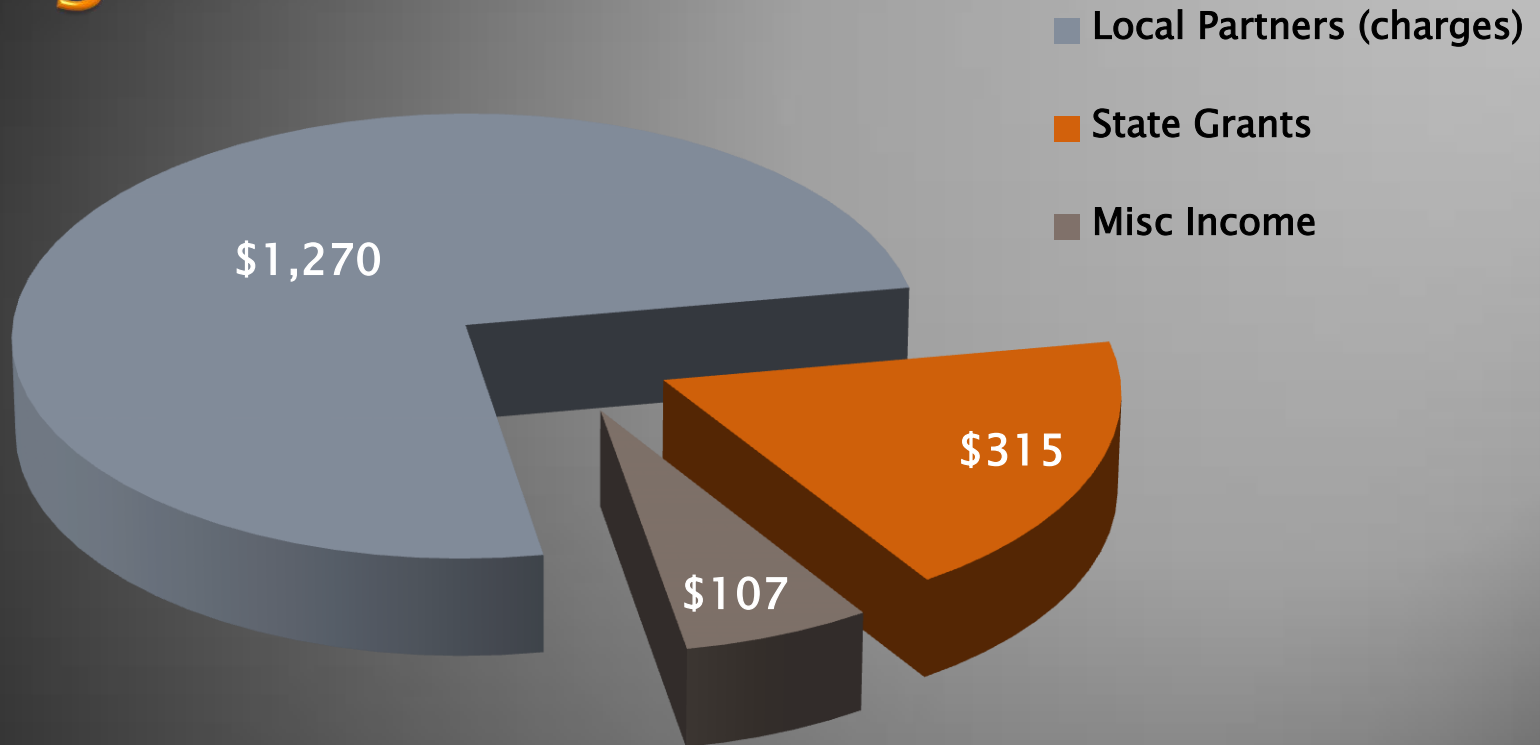
Background

75% of our work is enabled through PARTNERSHIPS!

- ▶ Scott County
- ▶ Scott WMO
- ▶ Prior Lake Spring Lake WD
- ▶ Vermillion River JPO
- ▶ Lower Minnesota WD
- ▶ Local cities & Townships
- ▶ State & Federal agencies



Budget



- ▶ Total budget \$1.7 million
- ▶ Operating Budget \$1.2 million

Highlights

- ▶ Construction site erosion and Sediment control
 - Cover all unincorporated areas (11 townships)
 - 5,630 inspections since 2014

- ▶ Wetlands conservation
 - Administer for 9 Townships
 - Processed 230 applications since 2014



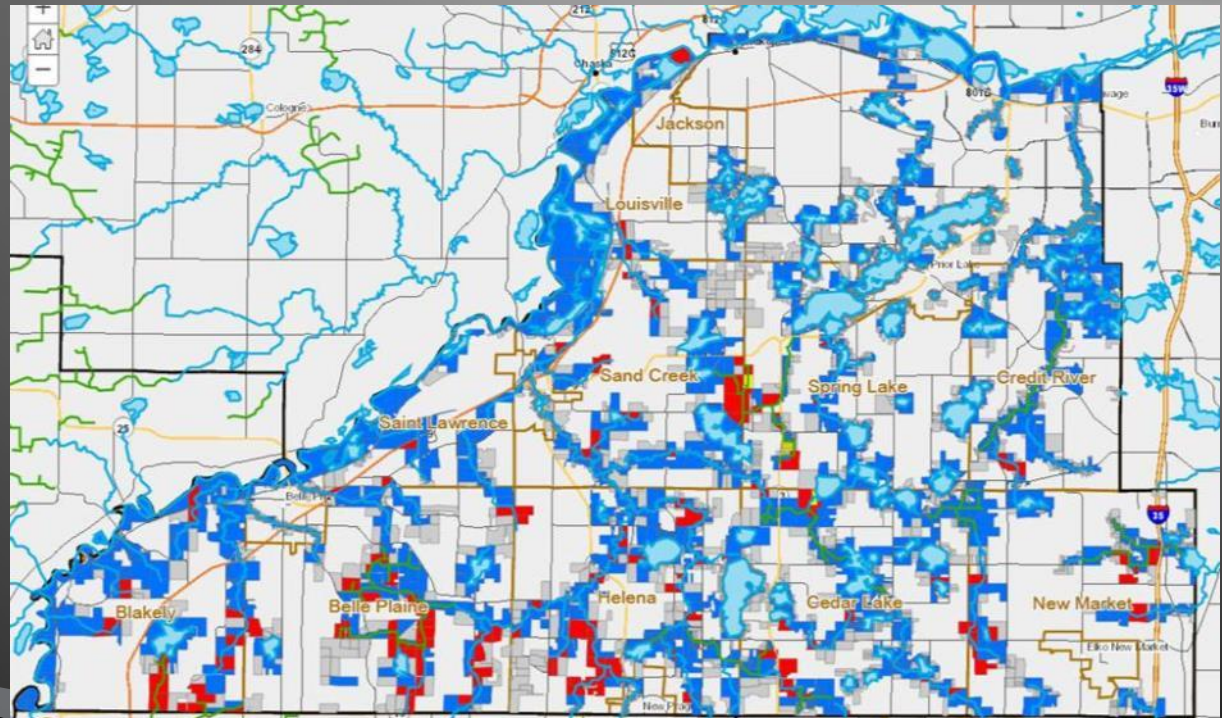
Highlights

- ▶ 2014 Flood Relief
 - Finally complete!
 - Awarded \$1.8 million (2015–2019)
 - Completed ~180 site assessments
 - Contracts with 79 landowners
 - Completed 78 projects



Highlights

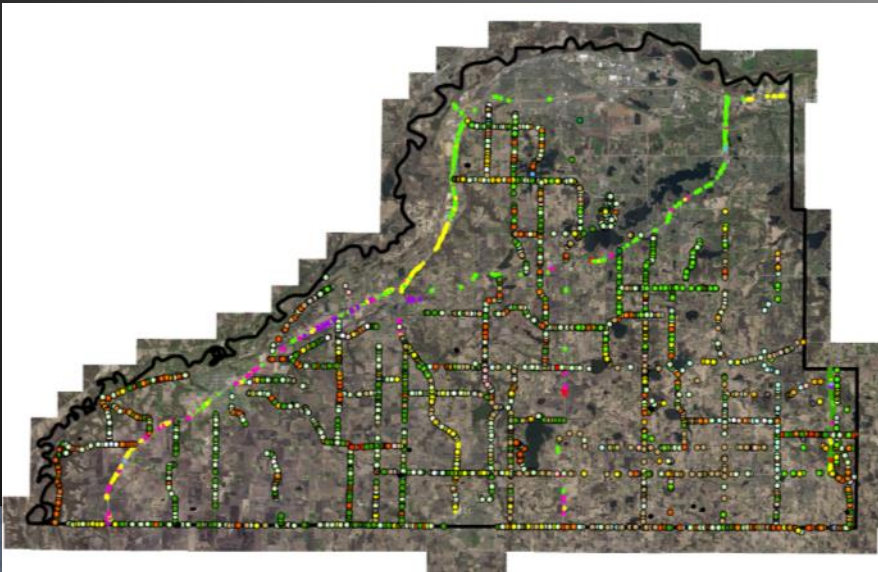
- ▶ MN Buffer Law (2015)
 - 5000 parcels subject to rule
 - Assisted 100's of landowners
 - 100% compliance in Scott County!



Highlights

► Invasive Species Management

- Established countywide partnership in 2017 (CWMA)
- Prepared 5-year Strategic Plan (#1 priority Wild Parsnip)
- Documented infestations along county and state roadways
- Awarded ~\$40,000 state grants since inception



Highlights

► Conservation Projects

- “Bread and butter”
- 210 installed since 10/17
- 800+ projects since 2009 with 560 different landowners
- 230 open service requests



Gully Stabilization (15 projects)



Inlet



Outlet



Streambank Erosion (2000 feet)



Lakeshore Erosion (1700 feet)



Prairie Restoration (220 Acres)



Raingardens (24 projects)



WHAT'S NEW?

Groundwater Conservation

- Water use assessments (“audits”)
- Public and private facilities
- Fixtures and mechanicals
- Identify savings opportunities
- Plan w/cost and ROI for replacement



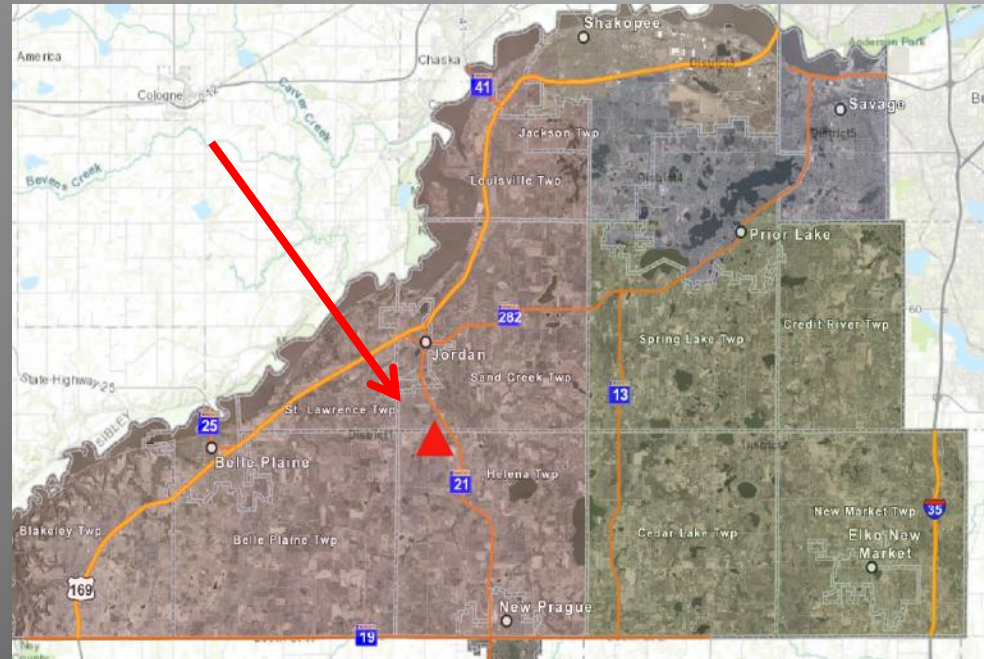
- ✓ Eagle Creek Elementary
- ✓ SCALE Training Facility
- ✓ SC Gov't Center
- ✓ SC Highway Shop



WHAT'S NEW?

Helena Wetland Bank

- ▶ 87 ac restoration site
- ▶ 55 ac of wetland credit
- ▶ SC Hwy/SWCD (55%)
 - Replacement for wetland impacts for road projects
- ▶ State – BWSR (45%)
 - For local wetland road replacement program



2 years to complete

\$1.6 m total cost

\$1.1 – \$1.6m taxpayer savings

Helena Wetland Bank

87 acres



Helena Wetland Bank

87 acres

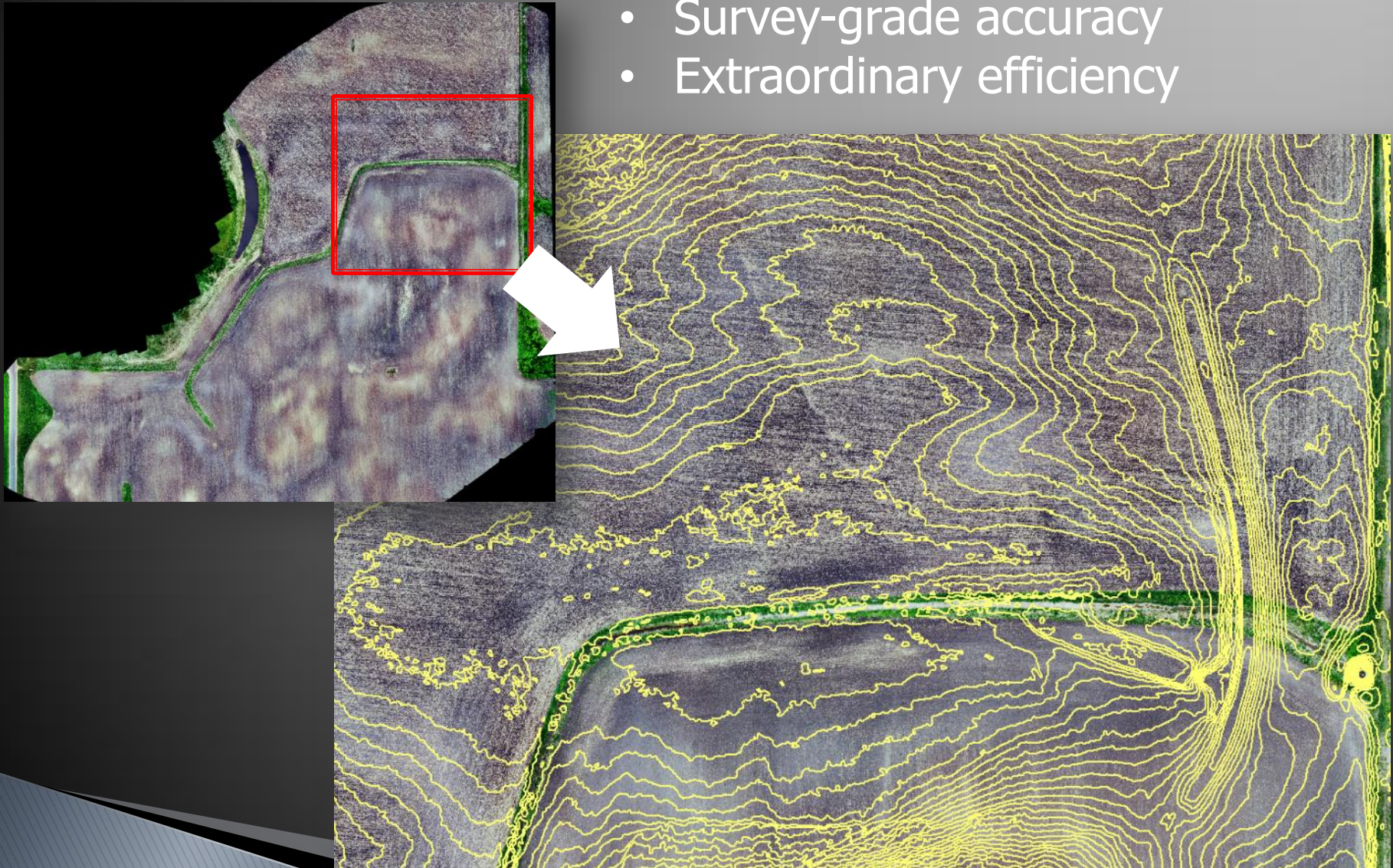


WHAT'S NEW?



What's New

- Survey-grade accuracy
- Extraordinary efficiency



Challenges

- ▶ Funding
 - ▶ Still no stable source of funding (no taxing auth.)
 - ▶ Rely on grants and agreements (40+)
 - ▶ Charge the county and local watershed partners for everything
 - ▶ Seek to resolve through SCALE initiative

Opportunities

- ▶ Increase collaboration
 - ▶ Wetland Conservation Act
 - ▶ Construction Site Erosion Control
 - ▶ Groundwater conservation



Thank You!

