

METROPOLITAN COUNCIL TOUCH POINTS WITH LOCAL GOVERNMENTS

November 8, 2019

Key Message

- Some legislators think cities are more impacted by Met Council actions and policy-making than counties
- This misperception needs to be addressed if Met Council governance changes in the future, and county representation is left out of the new model
- Counties, depending on responsibilities, have as much - if not more - interaction with Met Council than many cities

Role of Metropolitan Council

- Established Minn. Legislature 1967
 - MN Laws Chap. 896
 - MN Stat. 473.123
- The Metropolitan Council is the regional policy-making body, planning agency, and provider of essential services for the Twin Cities metropolitan region. The Council's mission is to foster efficient and economic growth for a prosperous region.

Role of Metropolitan Council

- In 1974, 1976 and 1994 the Legislature strengthened the Met Council's planning and policy roles, and merged the functions of three agencies (Metropolitan Transit Commission, Regional Transit Board and Metropolitan Waste Commission) into the Metropolitan Council
- 17 member policy board appointed at the pleasure of the Governor and represent 16 districts.

Role of Metropolitan Council

- Federal MPO Requirements and the Discussion on Elected Met Council Representation
- Federal Law: FAST Act (2015)

Role of Metropolitan Council

Strongest interactions with Counties:

- ▣ transportation
- ▣ parks and trails
- ▣ surface water mgmt.
- ▣ GIS
- ▣ future WWTP planning
- ▣ agricultural preservation
- ▣ rural density policies

Strongest interactions with Cities:

- ▣ wastewater treatment
- ▣ MUSA expansions
- ▣ WAC/SAC fees
- ▣ drinking water mgmt.
- ▣ housing
- ▣ livable communities
- ▣ urban density policies
- ▣ plat monitoring

County Touch Points



County Touch Points - Transportation

- Council's Transportation Policy Plan (TPP) focuses on:
 - ▣ Principal and Minor Arterial System (primarily County or State Highways)
 - Traffic Volumes and Forecasts
 - System Connections
 - ▣ Transit System (primarily operated at a regional or county level; rarely at local level)
 - ▣ Regional Bicycle Transportation Network (primarily built and maintained at a regional or county level)
 - ▣ Freight System

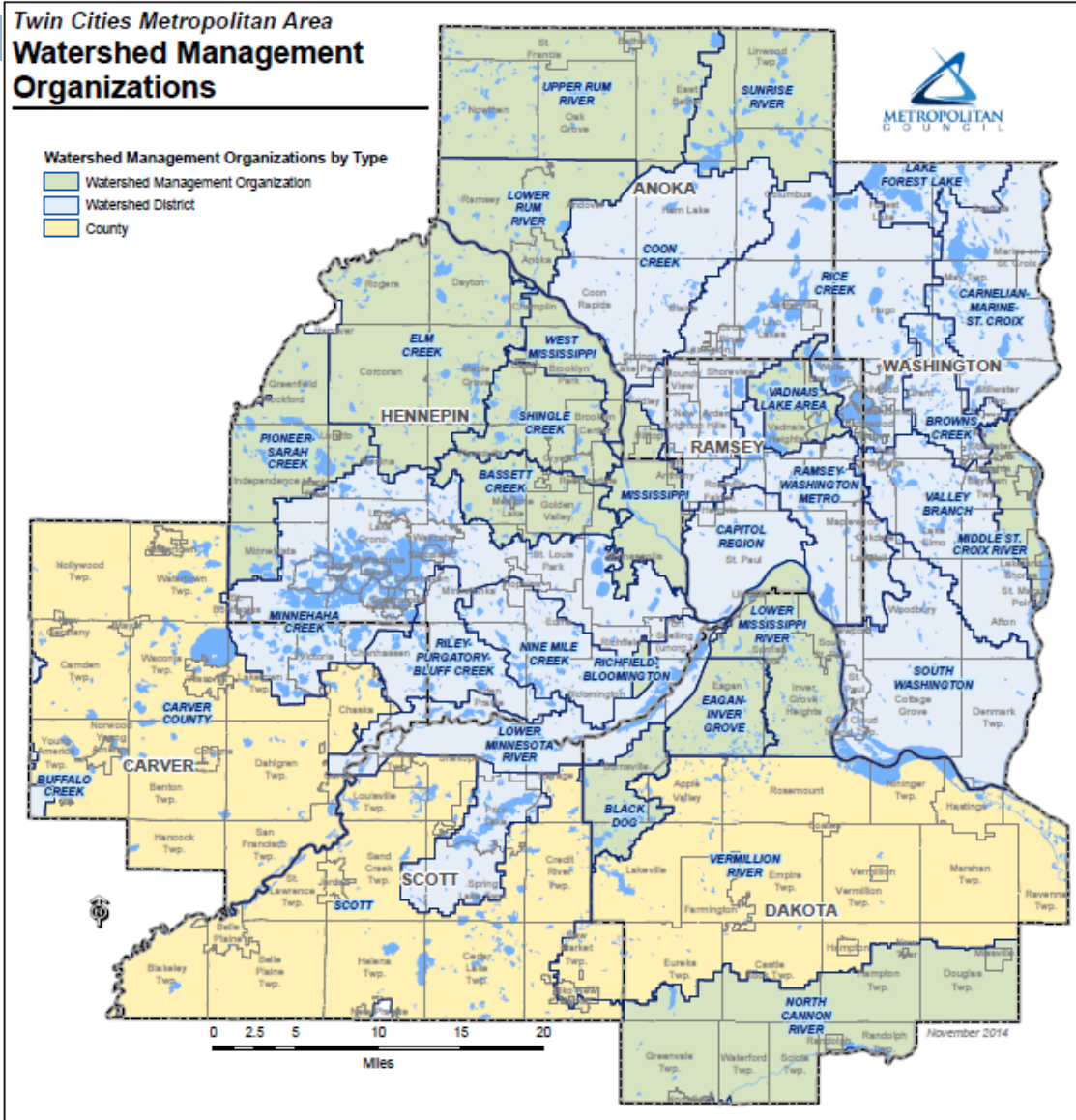
County Touch Points – TAB/Met Council

- County Representative
 - ▣ Technical Committees – all 7 counties serve on all 3 committees (TAC, F&P, Planning)
- Solicitations
 - ▣ Principal and A minors – almost all County and State highways
 - ▣ Bridges – almost all County and State highways
 - ▣ Traffic – almost all County and State highways
- Approval of functional class changes

County Touch Points - Parks and Trails

- Regional Parks Policy Plan
 - ▣ Policy framework for 10 regional park operating agencies
 - 6 Counties (Carver, Scott, Dakota, Washington, Anoka, Ramsey)
 - Bloomington, Minneapolis, St Paul
 - Three Rivers Park District
- Park and Trail Master Plans – approved by the Met Council
- Funding Allocation/Project Approval – State and Regional Bonds, Legacy, Environmental Trust Fund, State general fund
 - ▣ Capital Projects
 - ▣ Land Acquisition
 - ▣ Operational

County Touch Points - Water Resources



County Touch Points - Water Resources

- SW and South Metro areas are primarily County-based WMOs (Carver, Scott, Vermillion Joint Powers Org)
- Met Council interaction with WMOs
 - Technical studies
 - Technical assistance
 - Surface water monitoring
 - Watershed and local water plan reviews

County Touch Points - Metro GIS

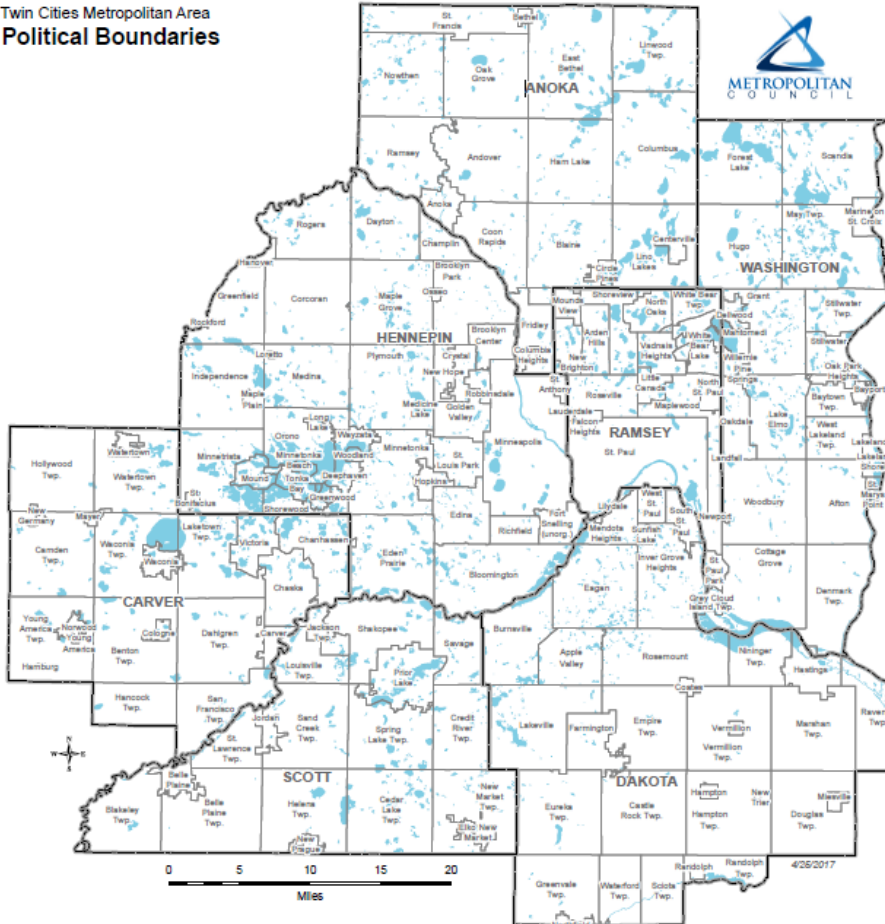
- Seven metro counties provide:
 - ▣ Parcels
 - ▣ Addresses
 - ▣ Street center lines
 - ▣ Property information
- Policy Board comprised of County Commissioners from 7 counties plus reps from 2 metro cities and 2 regional agencies

County Touch Points - Land Use

- County Land Use Plan
 - ▣ Rural densities consistent with Community Designation
 - ▣ Land Use Map changes require Council review
 - ▣ Cluster development regulations must be consistent with Council's Flexible Development Guidelines
- Regional Wastewater Planning
 - ▣ Future Wastewater Treatment Plants locations
 - ▣ Identifying Long Term Sewer Service Areas
- Ag Preserves Program – (primarily Counties)

City Touch Points

Twin Cities Metropolitan Area
Political Boundaries



- County Boundaries
- City and Township Boundaries
- Lakes and Rivers

Transportation

Sanitary Systems

Land Use

Housing

City Touch Points - Transportation

- City Transportation Plans:
 - ▣ Utilize County Plan to identify principal and minor arterials and traffic modeling
 - Transportation Analysis Zone development coordination
 - ▣ Show future extensions of collectors
 - ▣ Show pedestrian and local bicycle network
 - ▣ Relationship with transit investment plan
 - ▣ Freight system planning
 - ▣ Airport zone planning

City Touch Points – TAB/Met Council

- Elected City Representation – 10
 - ▣ Technical Committees – some cities serve on all 3 committees (TAC, F&P, Planning)
 - ▣ Only members of Association of Metro Municipalities (AMM) are represented on committees, plus Minneapolis and St. Paul
- Solicitations – may submit for county or state highway

City Touch Points - Sanitary Systems

- Sanitary System Planning
 - ▣ interceptor extensions and capacity
 - ▣ wastewater flows tied to MC forecasts
- Inflow/Infiltration
- SAC (Sewer Availability Charge) Determination

City Touch Points - Land Use

- Land Use
 - MUSA/growth management
 - Urban density targets/community designations
 - Transit Oriented Development standards
 - Mix of land use types
 - Staging of land development
 - Comp Plan Amendments tied to land use change

City Touch Points - Housing

- Affordable Housing Scores/Allocations
 - Regional share of low- to moderate-income housing
 - Livable Communities Grants

Township Touch Points

- Townships are unique to the county they reside in
 - ▣ Townships that do their own planning/zoning have direct interaction with Met Council
 - ▣ Townships where the county does the planning/zoning, there is little direct interaction with Met Council
- Townships with planned or developed Regional Parks

Summary

- Some legislators think cities are more impacted by Met Council actions and policy-making than counties
- Perception: Impact of Met Council policies are different:
 - ▣ Cities – MC policy impacts are more regulatory
 - ▣ Counties – MC policy impacts are more monetary (i.e., allocation of regional \$s)
- Both cities and counties need to be represented in any future Met Council governance model